

## INSTALLATION GUIDE

---

### Laundry Jet Return

*November 2022*

*Version 2.0 Revision 0.1*

*Rev 6 Return Units for use with ISense & ISlide*

*Laundry Jet  
2001 Challenger Avenue  
Oroville, CA 95965*





## Document Revisions

Date	Version Number	Document Changes
9/17/2021	1.0 Rev 0.1	Laundry Jet Installation Guide Rev 1
11/1/2022	2.0 Rev 0.1	Laundry Jet Installation Guide Rev 6

### Table of Contents

1	Introduction	5
2	Piping & Airflow	6
3	Contents	7
4	Pipe Installation Overview	8-12
	4 - Components & Tools	8
	4.1 - Pipe Installation Standards	9
	4.2 - Port Drop Installation	10
	4.3 - Port 90 Installation	11
	4.4 - Return Unit Pipe Drop	12
5	Return Unit Installation	13-14
	5 - Components & Tools	13
	5.1 - Return Unit Installation	14
6	Warranty	15



# 1 Introduction

**The Laundry Jet installation is comprised of four elements:**

- Laundry Jet Ports mounted in bedrooms, dressing rooms or bathrooms
- The laundry room Wall mounted or Cabinet Mount Vacuum Unit
- The PVC pipe and fittings that connect the ports to the laundry room through the attic space
- Laundry Jet Return Unit

Vacuum Laundry Pipe

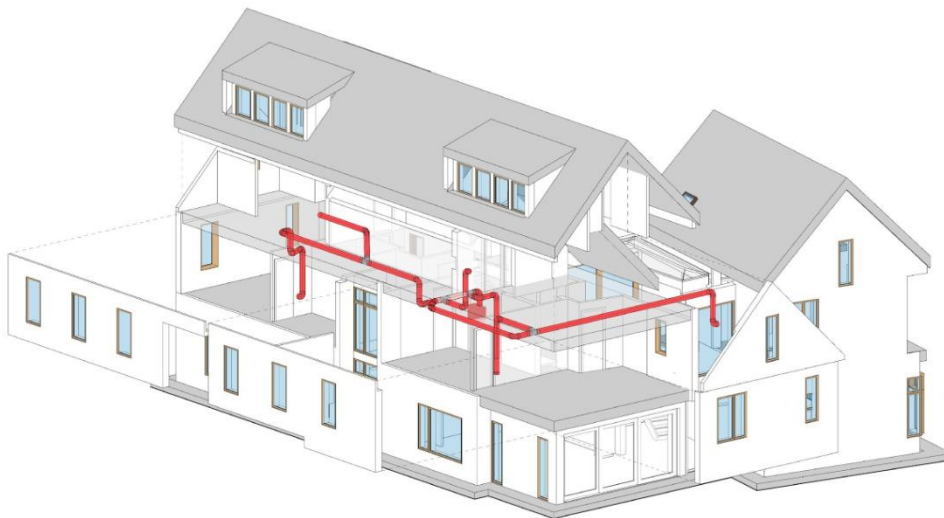
Laundry Jet specifies 6" SDR35 White Solvent Weld PVC pipe and fittings. This piping is light weight to make install quick and easy.

PVC piping is designed to have a smooth transition in between fittings and connections which ensures that clothing, bedding and towels will travel smoothly to the laundry room.

## Pipe & Fittings

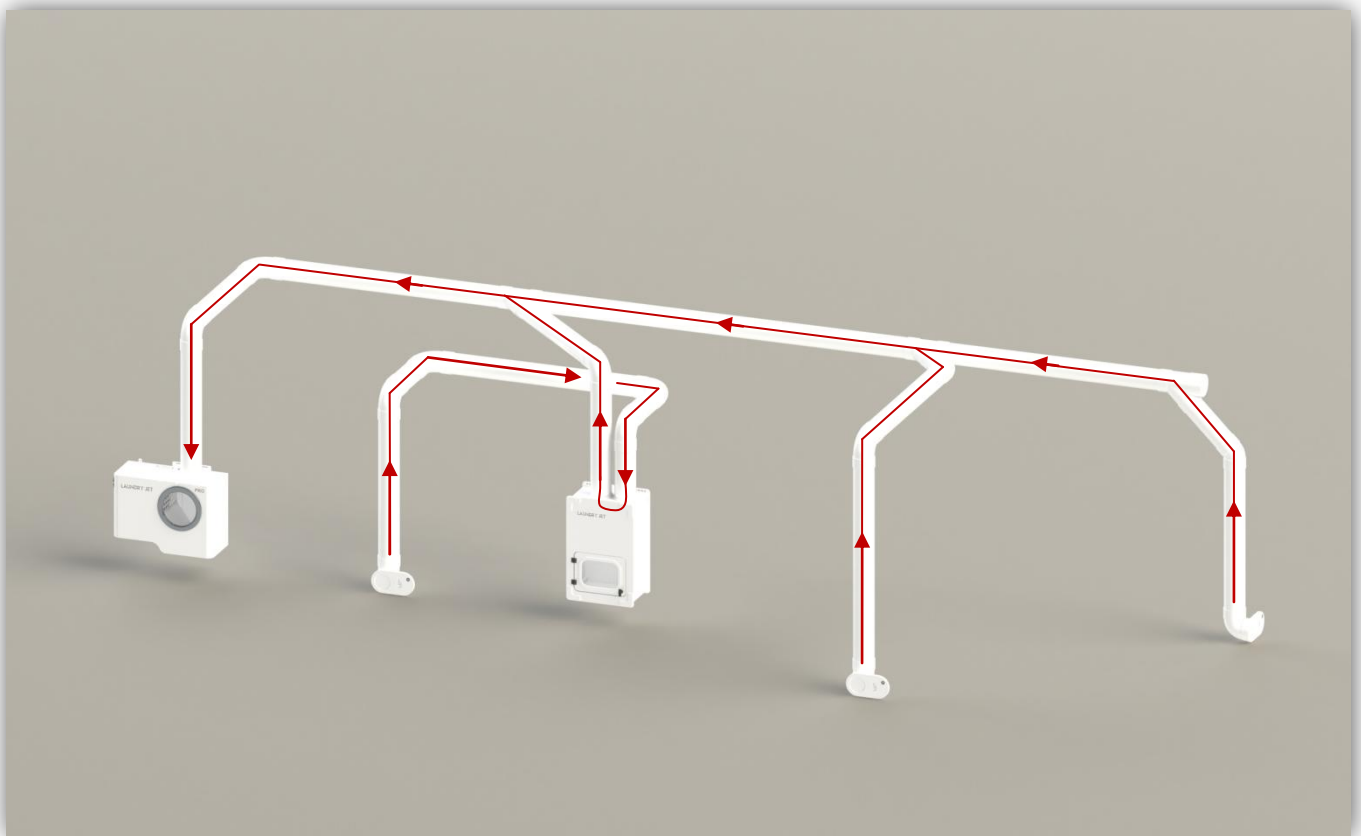
6" SDR35 White Solvent Weld PVC pipe 10' x 6"

All Fittings are 6" SDR35 White Solvent Weld



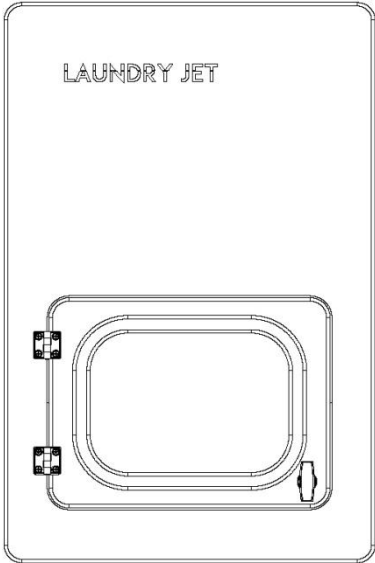
## 2 Piping & Airflow

### Laundry Jet Return Unit Piping and Airflow

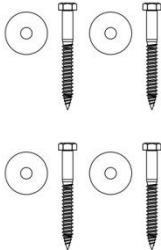


- The Return Unit has no power, and is used as an "interceptor".
- It is connected into the pipe network as illustrated above.
- The top right hand entry of the Return Unit connects via pipe to a dedicated port in the laundry room.
- The top left hand entry of the Return Unit connects the suction airflow of the main pipe run.
- The red arrows in the illustration above show the airflow throughout the system.

### 3 Contents



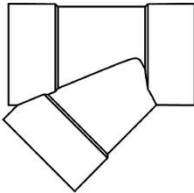
Laundry Jet Return Unit



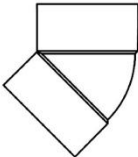
Hardware Kit

### Pipe Components

All Fittings are 6" SDR35 White Solvent Weld



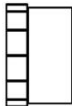
6 Inch Wye



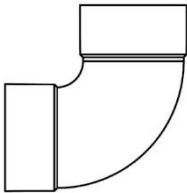
6 Inch 45° Elbow



6 Inch Coupler



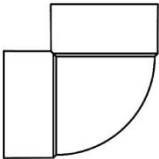
6 Inch Cleanout



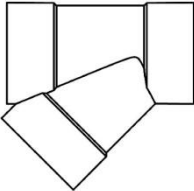
6 Inch Swept 90°

## 4 Pipe Installation Overview

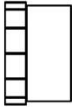
### Components



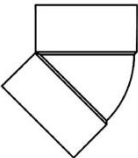
Port 90 Assembly



6 Inch Wye



6 Inch Cleanout Adapter



6 Inch 45° Elbow

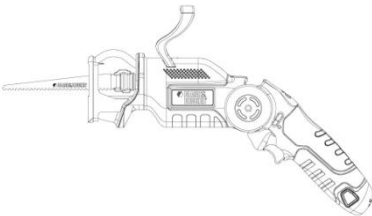


Cable Bundle

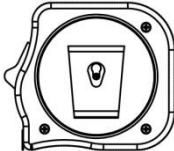
### Tools



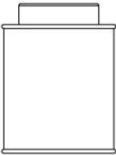
Cordless Drill



Sawzall



Tape Measure



Clear 2 Part PVC Glue



1" Wood Screw

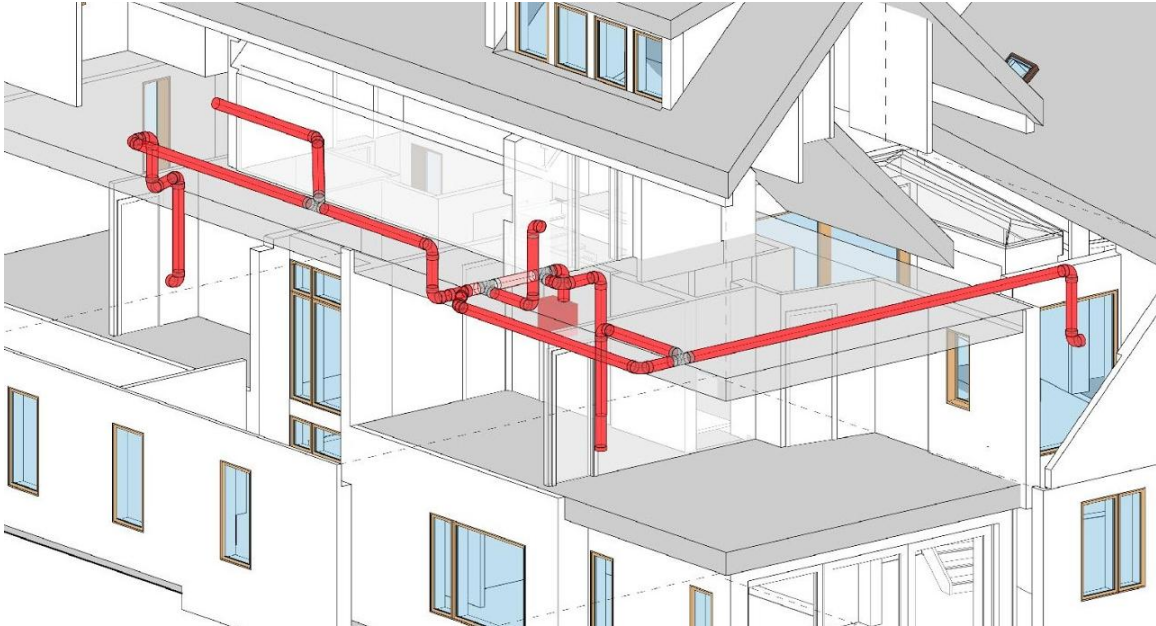


Plumber's Metal Strapping Tape



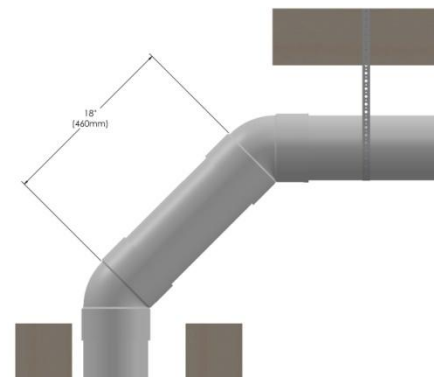
## 4.1 Pipe Installation Overview

### Pipe Installation Standards

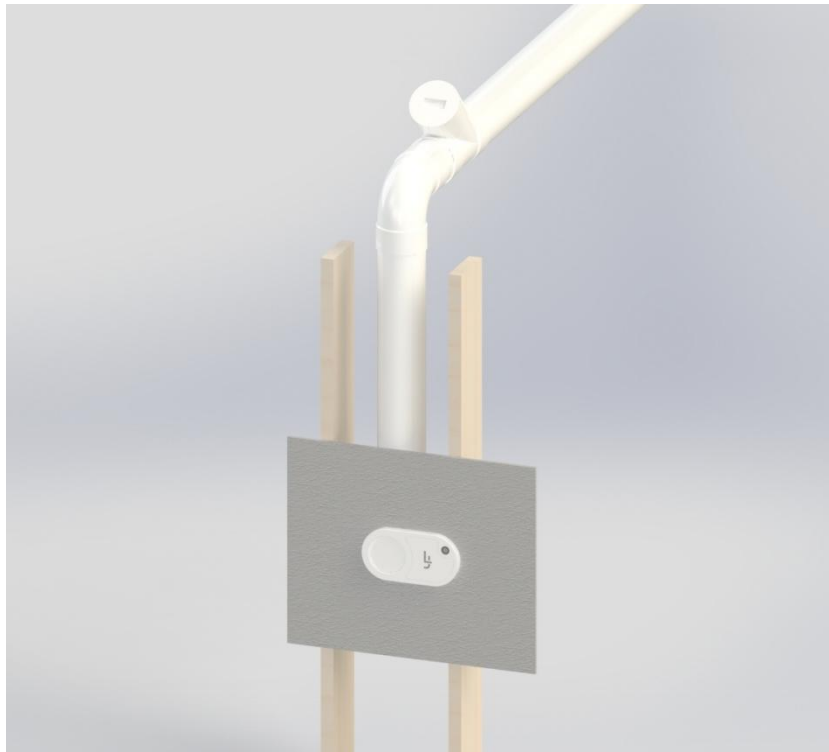


#### Required Piping Installation Standards

- All joints must use a minimum entry angle of 45 degrees with a break distance of 18 Inches (460 MM). See Image below.
- Pipe cuts must be straight and de burred before seating.
- Pipe must be completely seated in fitting connections.
- Seal all joints using standard PVC glue. Connections must be glued around 360 degrees to ensure maximum system performance.
- System must be strapped with “plumbers tape” (or equivalent) every 6 feet. Port 90 must be strapped and secured prior to Port installation.
- Install Cleanout ports every 50 feet on angled runs. Straight trunk lines can run up to 100 feet with cleanouts at either end.



## 4.2 Pipe Installation Overview

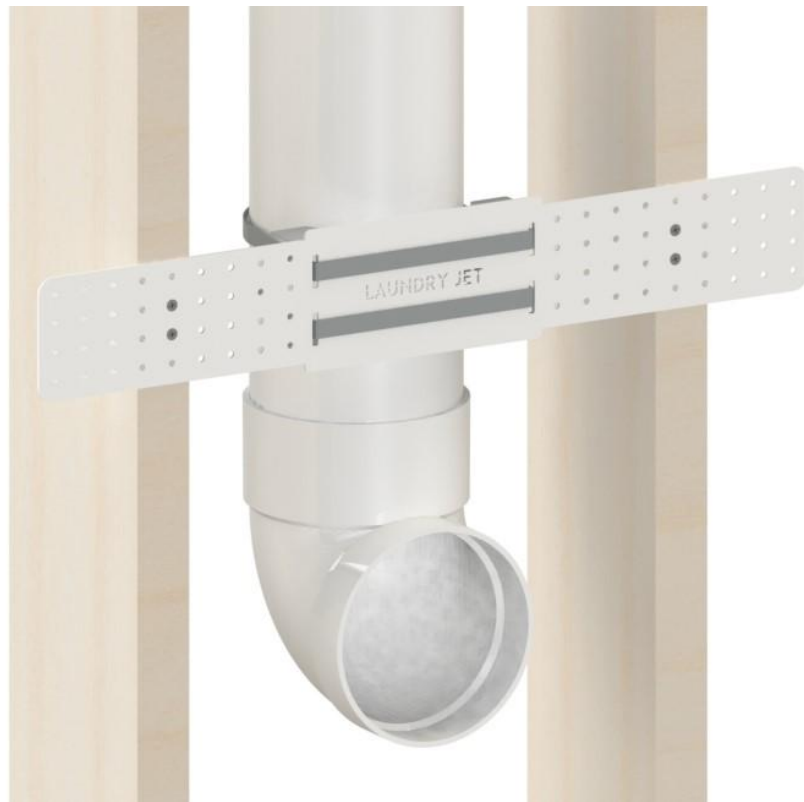


### Port Drop Installation

- Mount port 90 using the Port 90 Mount Bracket. See Page 11 for Port 90 Installation. Use a standard SDR 6" Swept 90 for your Port Drop Installation. Block and strap drop line at midway point



### 4.3 Pipe Installation Overview



#### Port 90 Installation

- Port 90 must be installed with front face of Port 90 flush with the finished face of interior wall.
- Port 90 must be installed on a plum horizontal port drop line.
- Use the Port 90 Mount Bracket to align and secure the Port 90 to the frame ( unless a remodel)

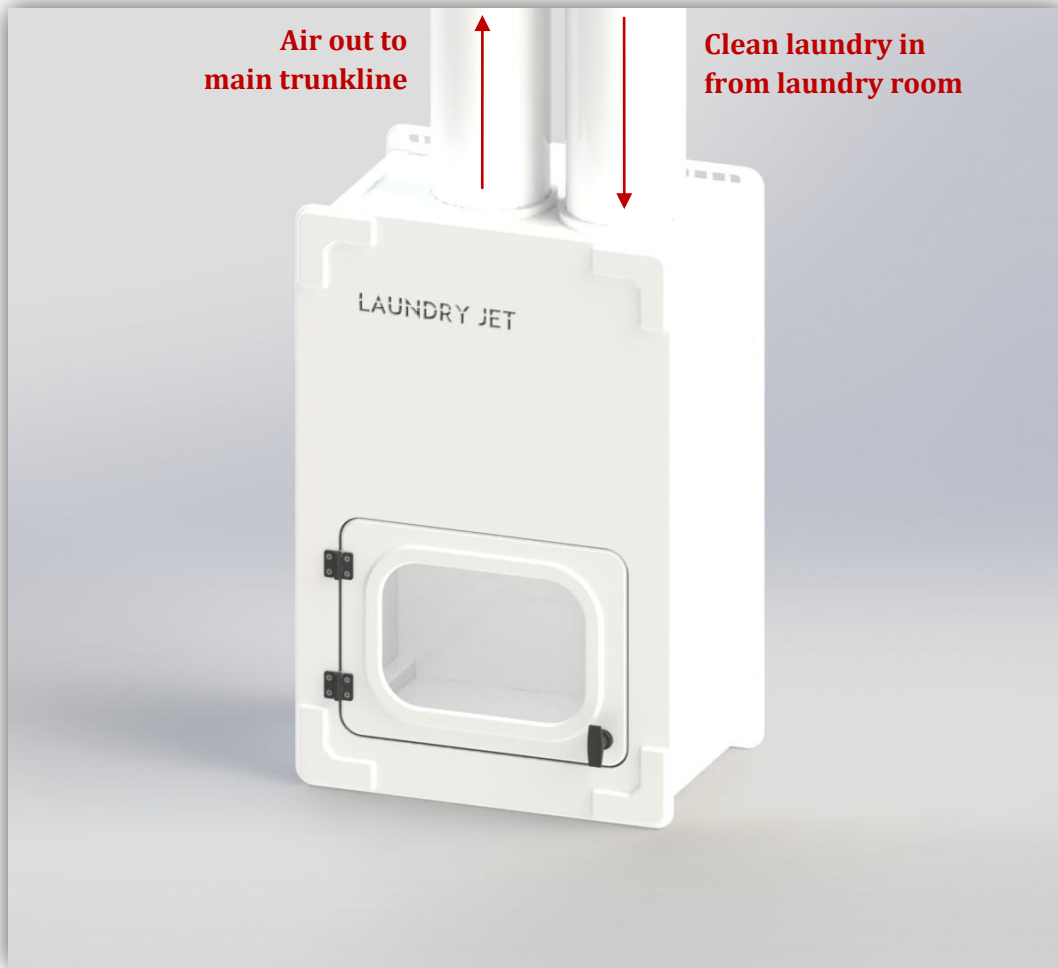


Pipe Mount Bracket



1" Wood Screw

## 4.4 Pipe Installation Overview

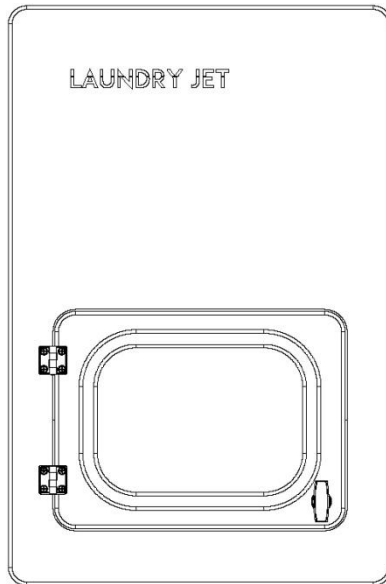


### Return Unit Pipe Drop

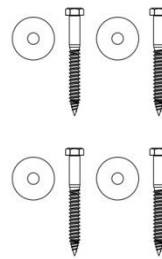
- Directly above your return unit on the ceiling use pipe drop template to cut hole positions in the ceiling.
- Install a standard swept 90 drop to each port using a swept 90 elbow.
- Strap pipe at attic to ceiling transition.
- Make connection to Return Unit inlet using structural tape.. Make sure that Vacuum Chamber connection has a complete seal for maximum performance.
- Wrap tape around seam repeatedly to produce a thick stable joint.

## 5 Return Unit Installation

### Components



Laundry Jet Return Unit

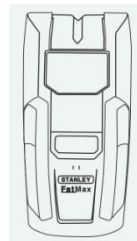


Hardware Kit

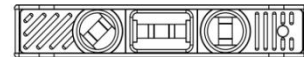
### Tools



Cordless Drill



Stud Finder



Level

### 5.1 Return Unit Installation



#### Return Unit Installation

- Directly above your return unit, on the ceiling use pipe drop template to cut hole positions in the ceiling.
- Using a stud finder, locate mounting stud position. Mark Return Unit installation position on the intended mount wall.
- Draw a vertical line down the center of your mount stud at the elevation of your return unit mount cutout. The line should be long enough to see in both mount positions.
- Move the unit into position until you can see your mount line in the mount slots.
- Mark your mount hole position for predrill at .25" (6.5mm) Predrill your mount holes to 3" (76mm)
- Using a socket drive on your drill, set the return unit into position and install the 4 provided 1/4"x 3" Lag screws.
- Connect both pipes to the unit.



## 6 Warranty

### Lifetime Limited Warranty

Laundry Jet is protected by a 3 year limited lifetime warranty. This warranty is valid from the date of purchase, for as long as you are the original owner, the system remains at its original place of installation and as long as the warranty form has been completed and submitted on our website: <http://www.laundryjet.com/warranty>

- Plastic body of the Laundry Jet Units
- Laundry Jet Posiflo Power unit
- Ports
- Digital Control Board

THIS IS THE SOLE AND EXCLUSIVE WARRANTY OF LIFE FLOW LLC – LAUNDRY JET. IMPLIED WARRANTIES, INCLUDING IMPLIED WARRANTIES OF MERCHANTABILITY OR FITNESS FOR A PARTICULAR PURPOSE ARE LIMITED IN DURATION OF LIMITED WARRANTY PERIOD.

Should any defect in material or workmanship appear within the time of the above warranty, the selling Laundry Jet Dealer should be contacted in the first instance. The Dealer shall repair or replace (at Laundry Jet's sole option), or credit, such part or parts in accordance with the applicable warranty period stated above. Lifeflow, LLC – Laundry Jet shall not be responsible for such service unless provided by an authorized Laundry Jet Dealer utilizing authentic Laundry Jet replacement parts.

This warranty does not apply to loss or damage resulting from (at Laundry Jet's sole discretion) normal wear and tear, vacuum of drywall dust, neglect, abuse acts of God, accidents, improper installation, improper modification or alteration, improper use and operation or failure to provide proper maintenance.

Some countries, states or provinces do not allow exclusion of warranties or limitations of damages, so the above limitations and exclusions may not apply to you. This warranty gives you specific legal rights. You may have additional rights, which vary from State to State, or Province to Province. This limited warranty applies to USA and Canada installations only. For specific warranty information for your Country, consult your authorized Laundry Jet Dealer.

Other warranties apply to other parts of this equipment and optional accessories. Please contact the material accompanying the individual items.

**LIFEFLOW, LLC – LAUNDRY JET, SHALL NOT BE RESPONSIBLE FOR ANY CONSEQUENTIAL, INCIDENTAL, OR SPECIAL DAMAGES ARISING FROM THE USE OF THIS SYSTEM.**

**Extended warranties are available at the time of purchase.**

